



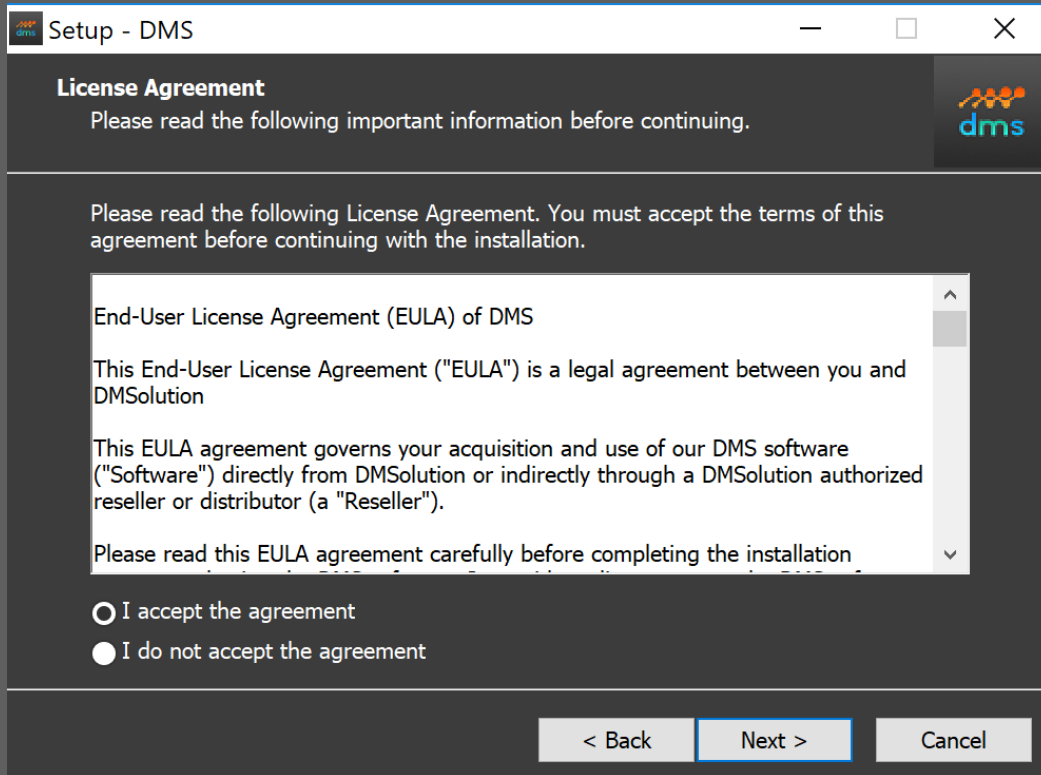
INSTALLATION GUIDE

DMS SOFTWARE

This installation guide provides instructions on how to correctly install DMS software.

1. License Agreement :

Please read and accept the license agreement then click Next.



The image shows a Windows-style dialog box titled "Setup - DMS". The dialog has a dark background with white text. At the top left, there is a small logo with the text "dms". The main title is "License Agreement" in bold, followed by the instruction "Please read the following important information before continuing." In the top right corner, there is a logo with the text "dms" and a stylized orange and blue graphic. The main content area contains the following text: "Please read the following License Agreement. You must accept the terms of this agreement before continuing with the installation." Below this is a scrollable text box containing the "End-User License Agreement (EULA) of DMS". The text in the scroll box reads: "This End-User License Agreement ('EULA') is a legal agreement between you and DMSolution. This EULA agreement governs your acquisition and use of our DMS software ('Software') directly from DMSolution or indirectly through a DMSolution authorized reseller or distributor (a 'Reseller'). Please read this EULA agreement carefully before completing the installation." Below the scroll box are two radio button options: "I accept the agreement" (which is selected) and "I do not accept the agreement". At the bottom of the dialog, there are three buttons: "< Back", "Next >" (which is highlighted with a blue border), and "Cancel".

Setup - DMS

License Agreement
Please read the following important information before continuing.

Please read the following License Agreement. You must accept the terms of this agreement before continuing with the installation.

End-User License Agreement (EULA) of DMS

This End-User License Agreement ("EULA") is a legal agreement between you and DMSolution

This EULA agreement governs your acquisition and use of our DMS software ("Software") directly from DMSolution or indirectly through a DMSolution authorized reseller or distributor (a "Reseller").

Please read this EULA agreement carefully before completing the installation

I accept the agreement
 I do not accept the agreement

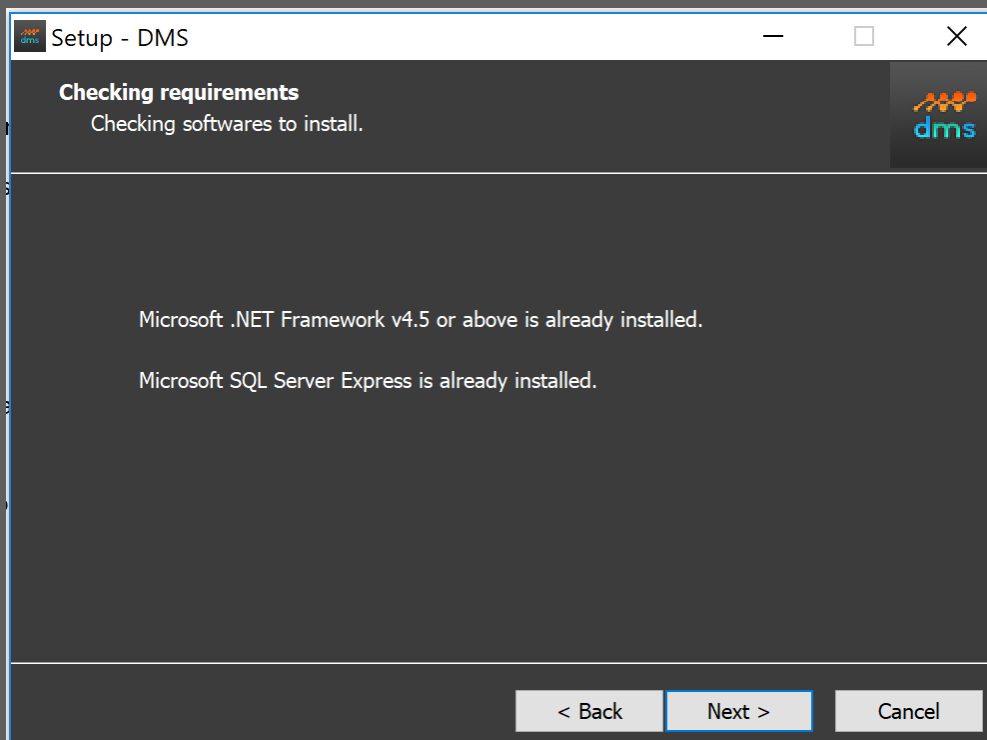
< Back Next > Cancel

2. Requirements :

DMS requires the following components to be installed:

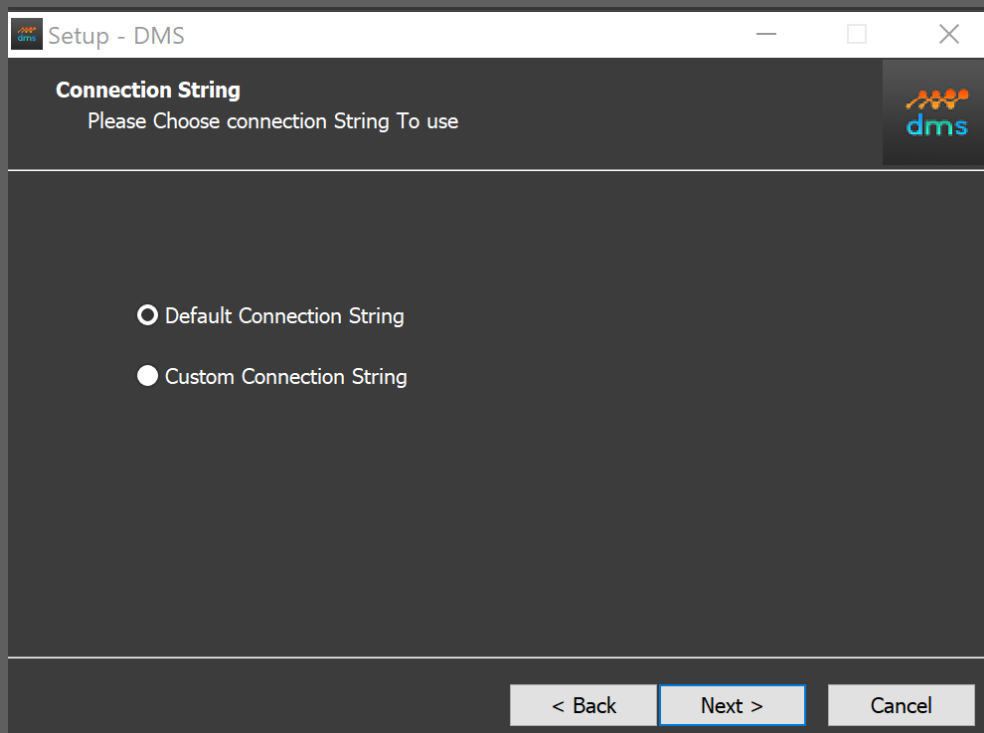
- Microsoft .Net Framework 4.5 or above.
- Microsoft SQL Server EXPRESS 2012 or 2008 R2.

The setup file of DMS suggests to install these components if need be.



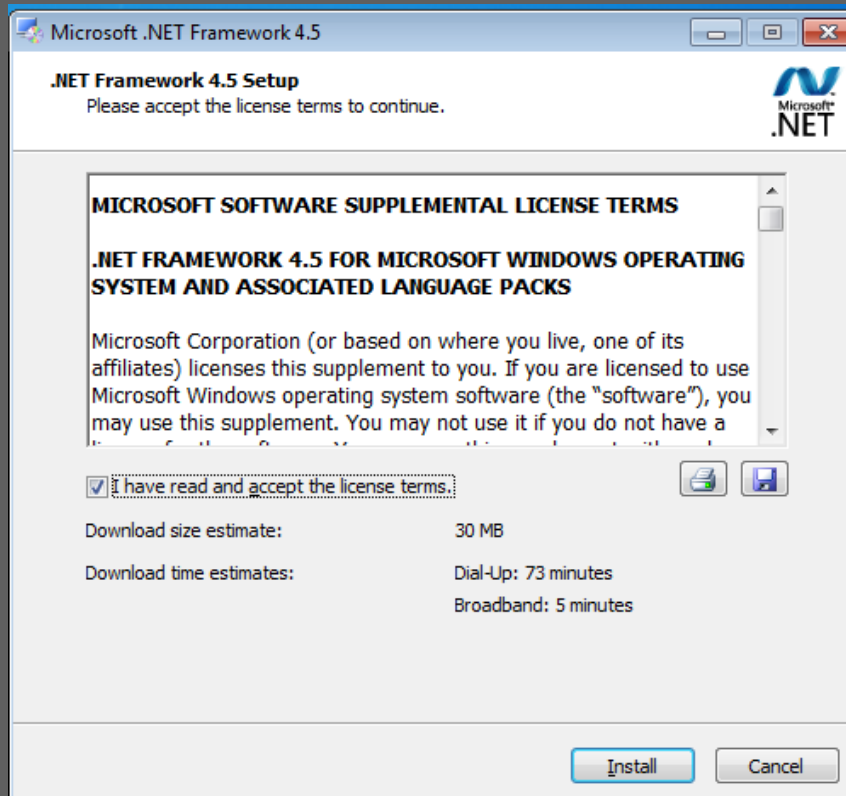
3. Connection string :

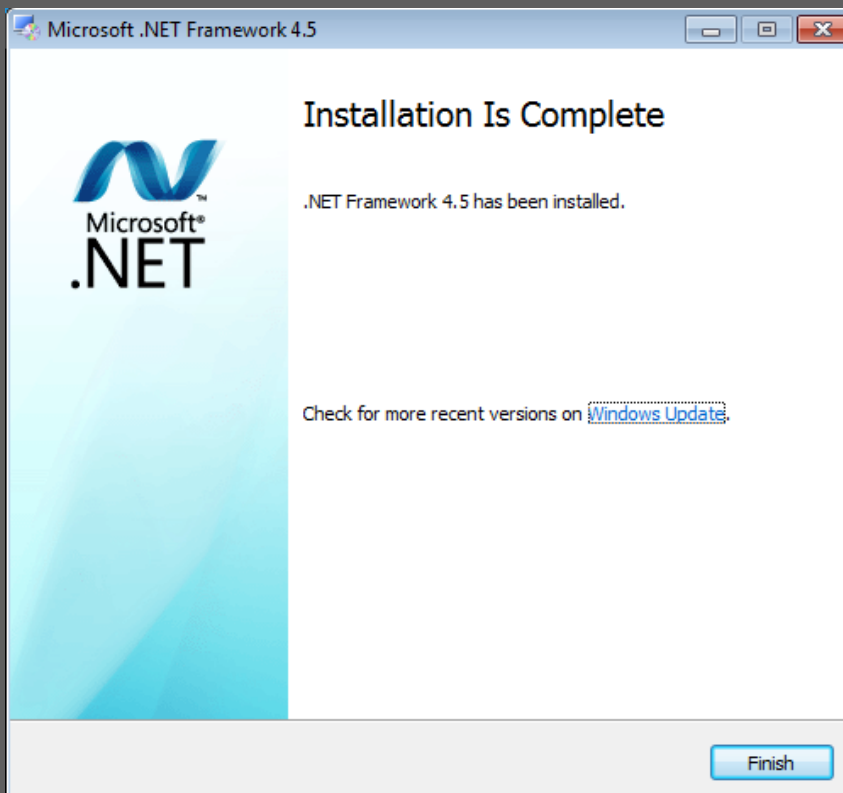
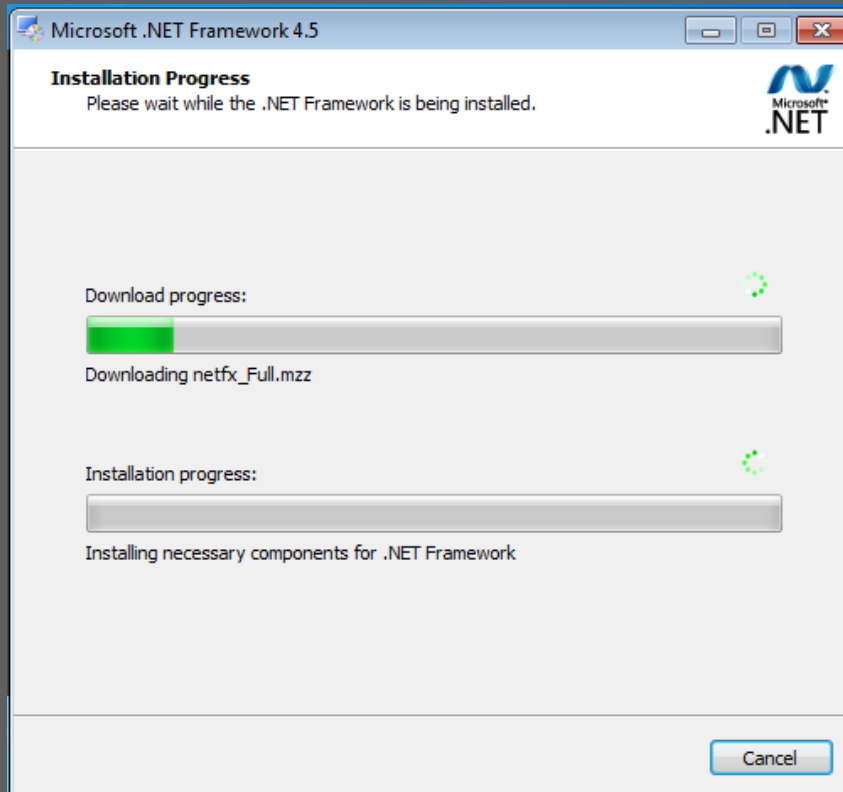
In the next step, for local use, please check off the setting «Default connection String». « Custom Connection String » is used to connect DMS to a database that is located on a server.



4. Microsoft .Net Installation :

During the installation of DMS, the setup of Microsoft .Net 4.5 is launched in case it is not already installed.

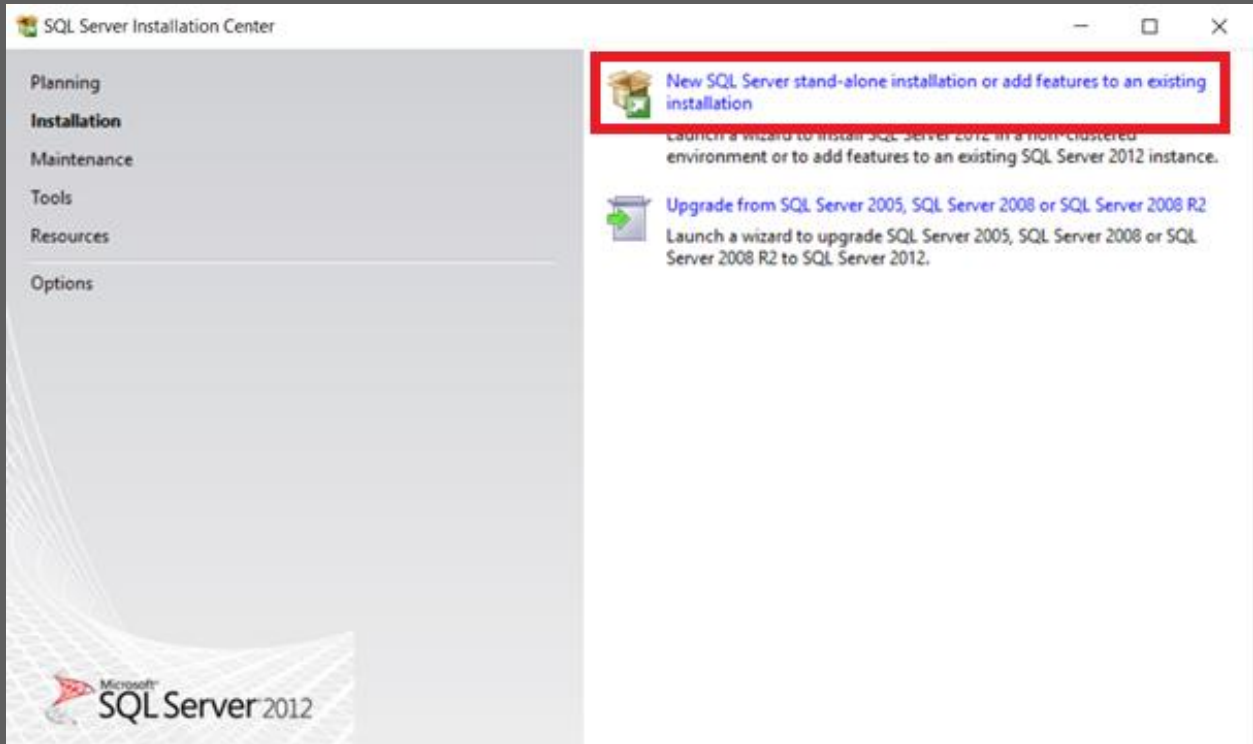




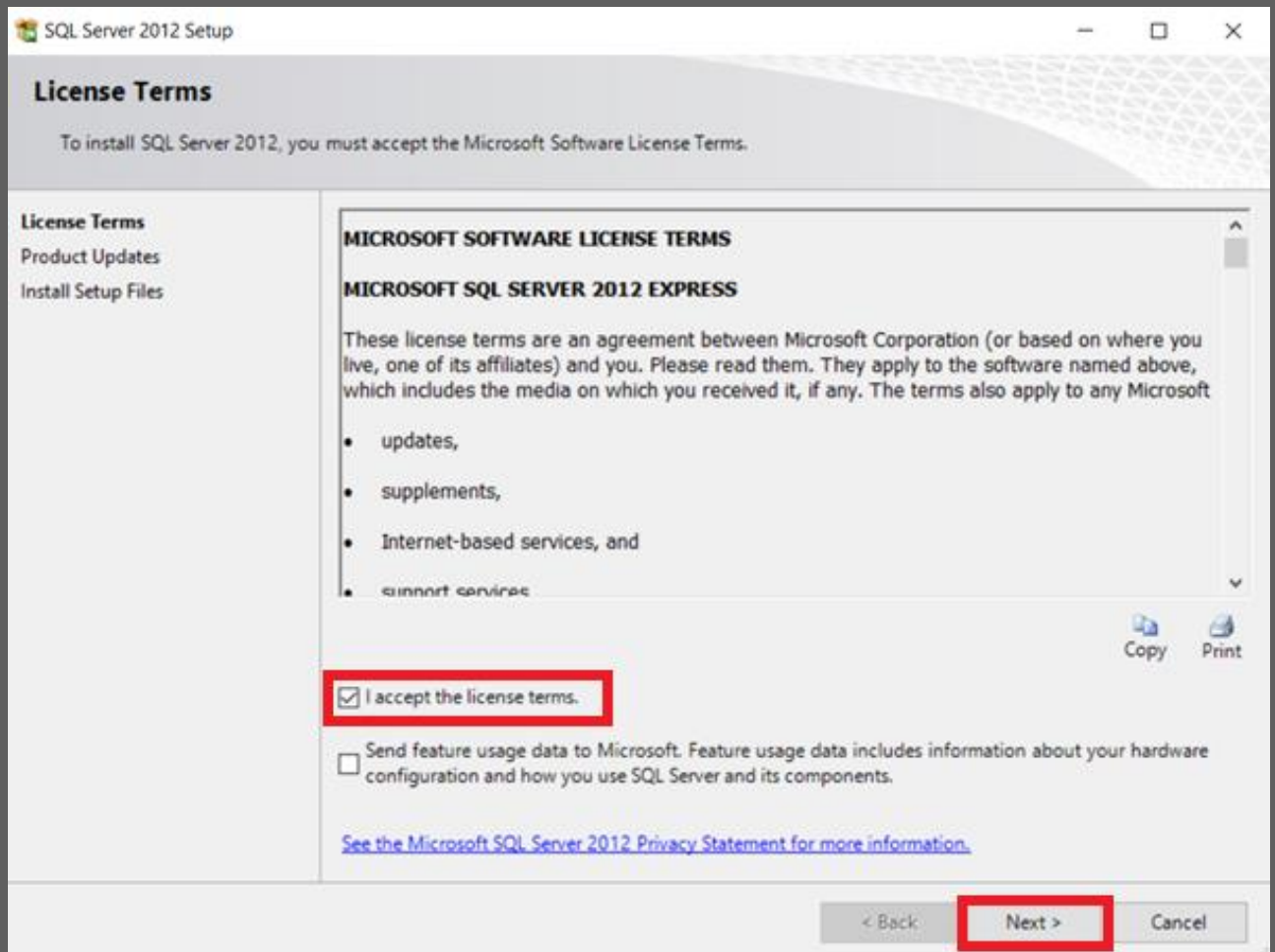
5. SQL SERVER EXPRESS INSTALLATION :

In order to install SQL SERVER EXPRESS, please complete the following steps :

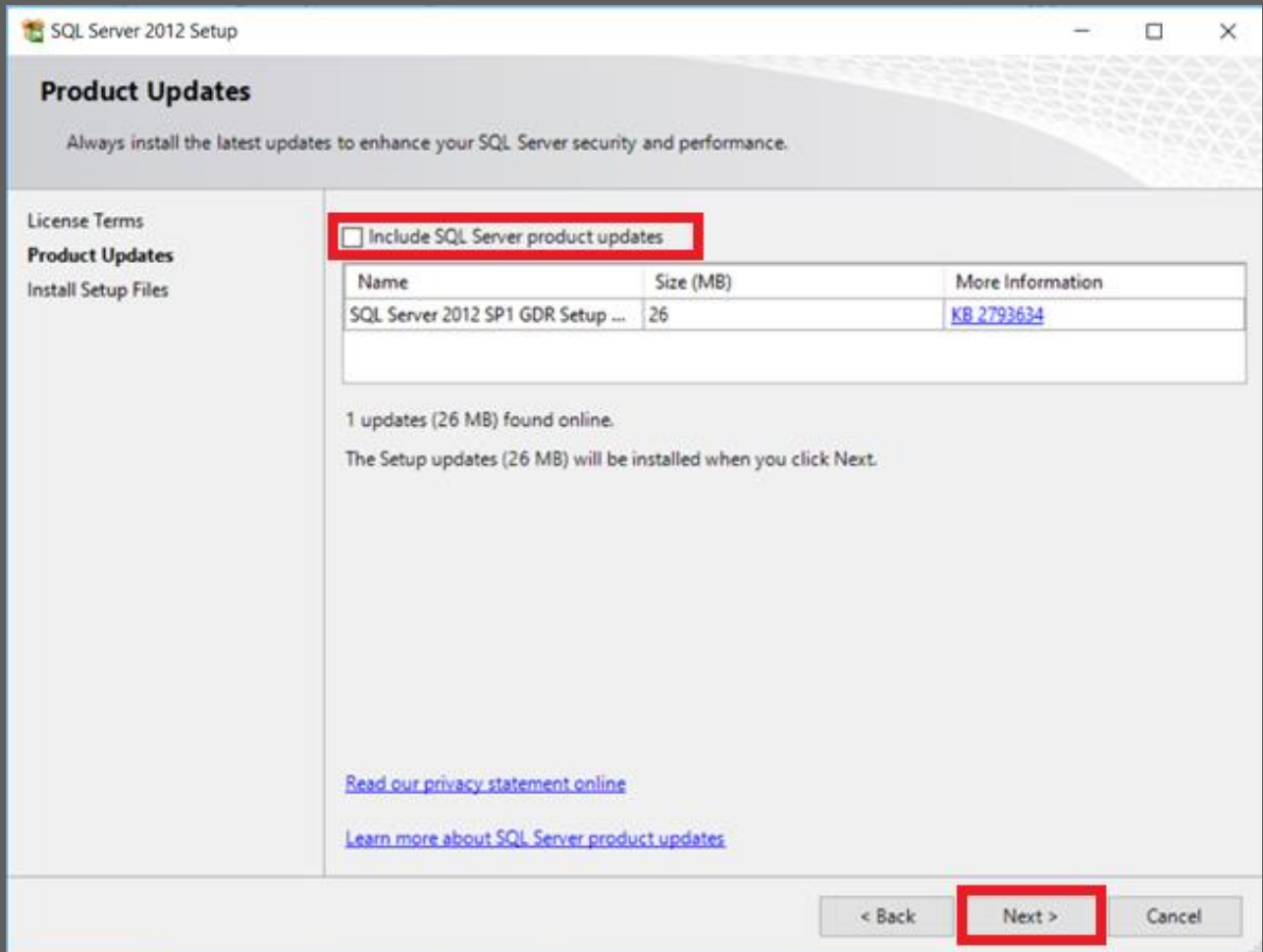
To get started, choose the top option to install a new stand-alone installation.



Please read and accept the license agreement and click Next.



Uncheck the setting « Include SQL Server product updates » then click on Next.



Please wait until the setup files are installed.

SQL Server 2012 Setup

Install Setup Files

SQL Server Setup will now be installed. If an update for SQL Server Setup is found and specified to be included, the update will also be installed.

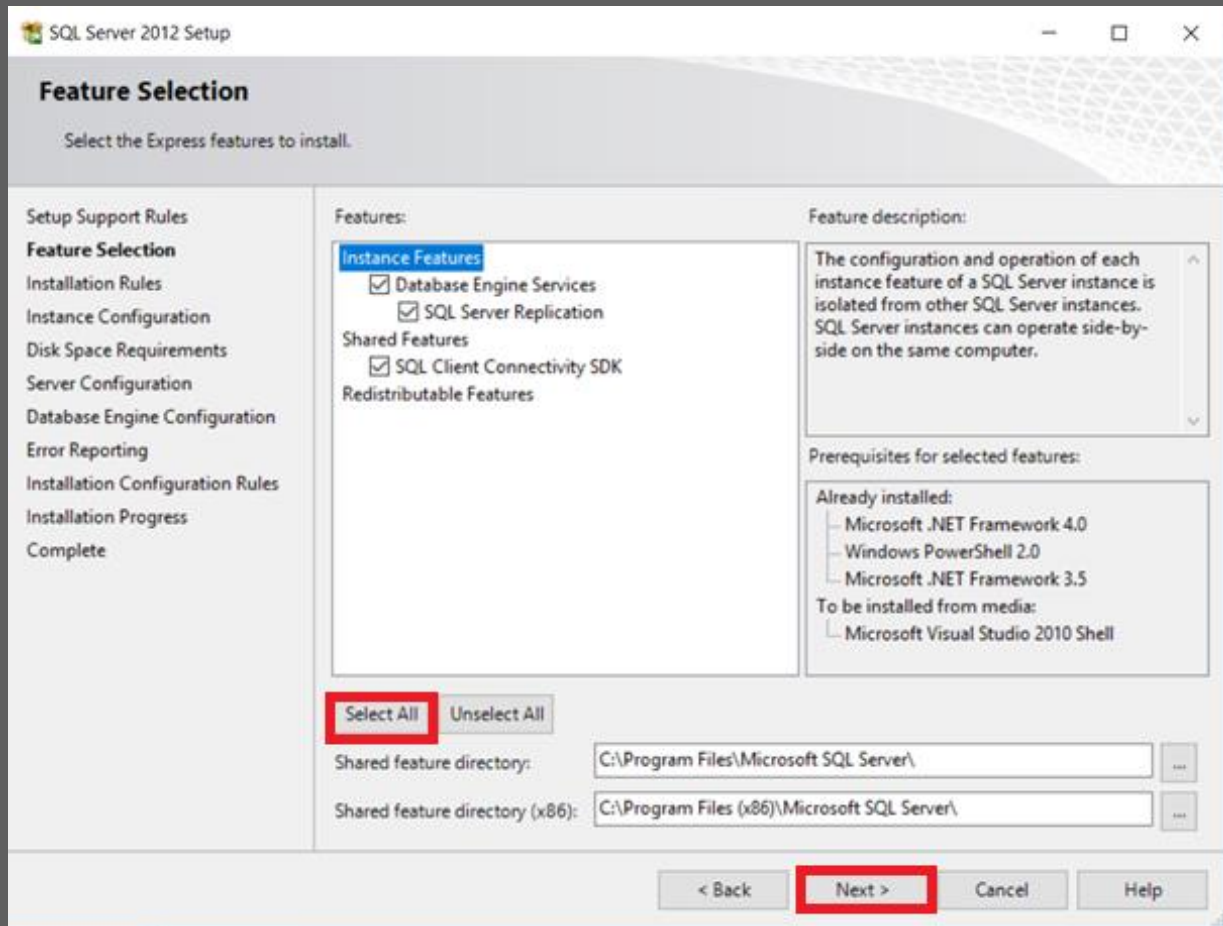
License Terms
Product Updates
Install Setup Files

SQL Server Setup files are being installed on the system.

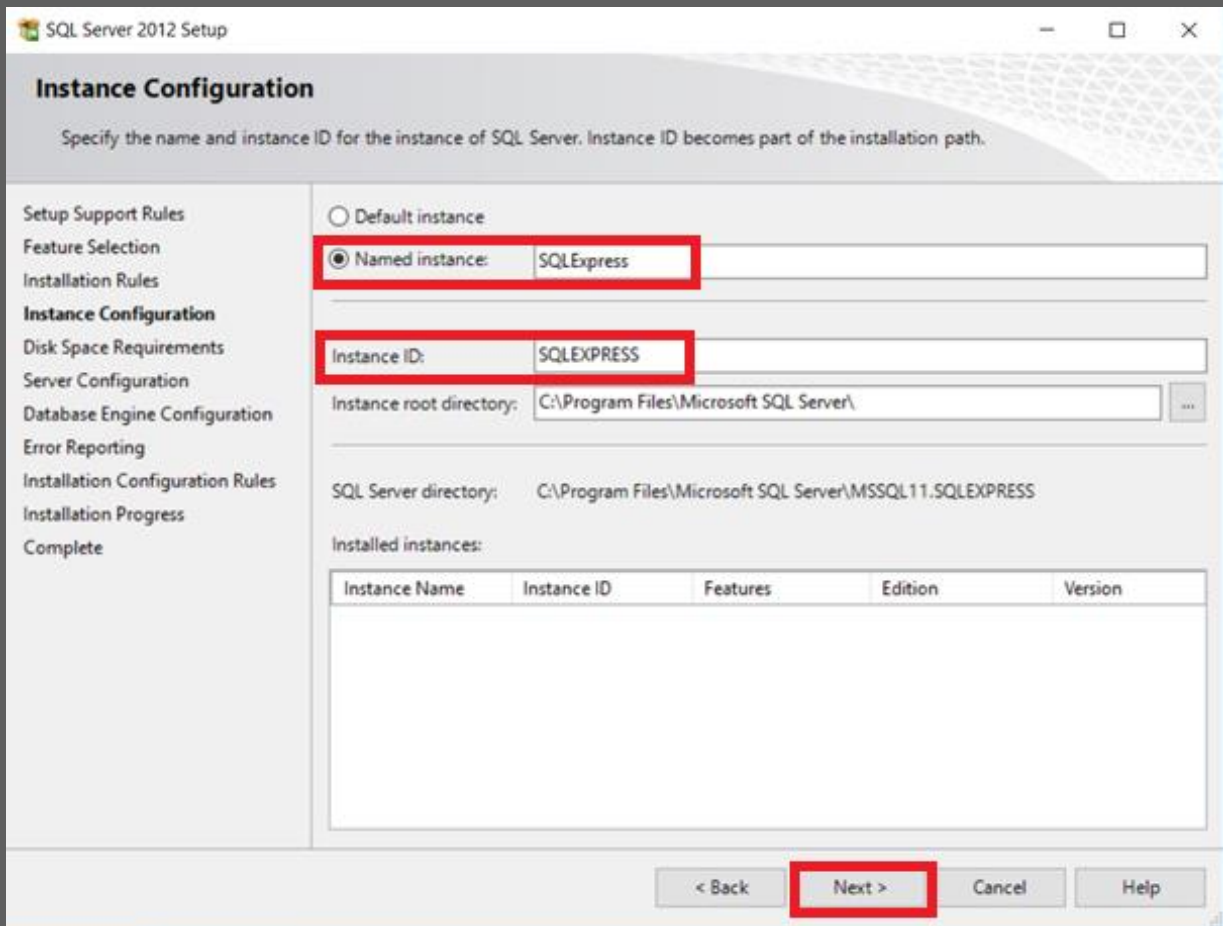
Task	Status
Install Setup files	In Progress

< Back Install Cancel

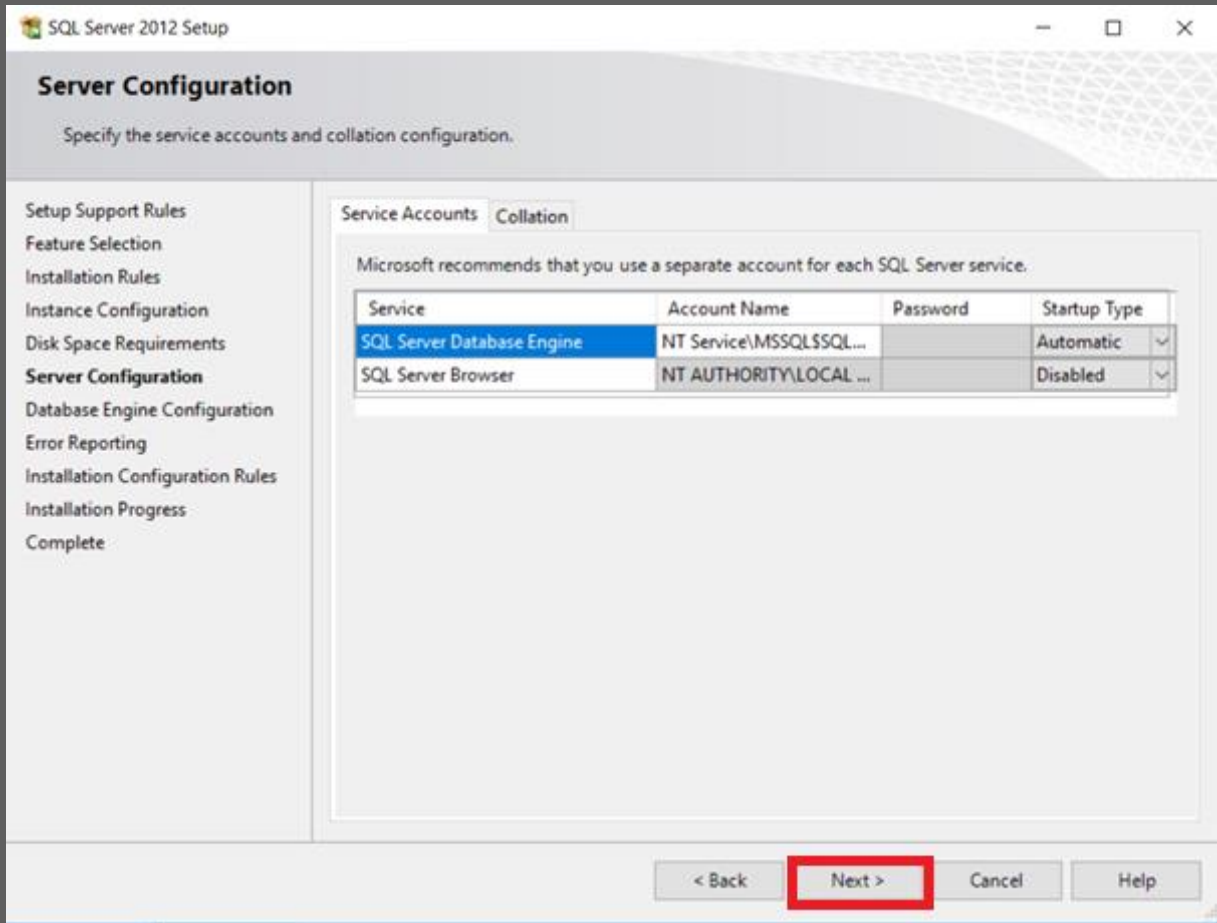
At this point, you can choose the features that you want to install. You can also change the installation folder if you do not want to install SQL Server to the default location. Following that please click on « Select All » then Next.



Now you can configure the SQL instance. Please be sure that both the named instance and the Instance ID are set to « SQLEXPRESS » (as you can see in the figure below). In case the Instance ID is different from « SQLEXPRESS », please follow the four steps in the appendix to change the instance name in DMS software after finishing the installation.



Please keep the default settings in this window then click Next.



Please check « Windows authentication mode » then click Next.

SQL Server 2012 Setup

Database Engine Configuration

Specify Database Engine authentication security mode, administrators and data directories.

Setup Support Rules
Feature Selection
Installation Rules
Instance Configuration
Disk Space Requirements
Server Configuration
Database Engine Configuration
Error Reporting
Installation Configuration Rules
Installation Progress
Complete

Server Configuration | Data Directories | User Instances | FILESTREAM

Specify the authentication mode and administrators for the Database Engine.

Authentication Mode:

- Windows authentication mode
- Mixed Mode (SQL Server authentication and Windows authentication)

Specify the password for the SQL Server system administrator (sa) account.

Enter password:

Confirm password:

Specify SQL Server administrators

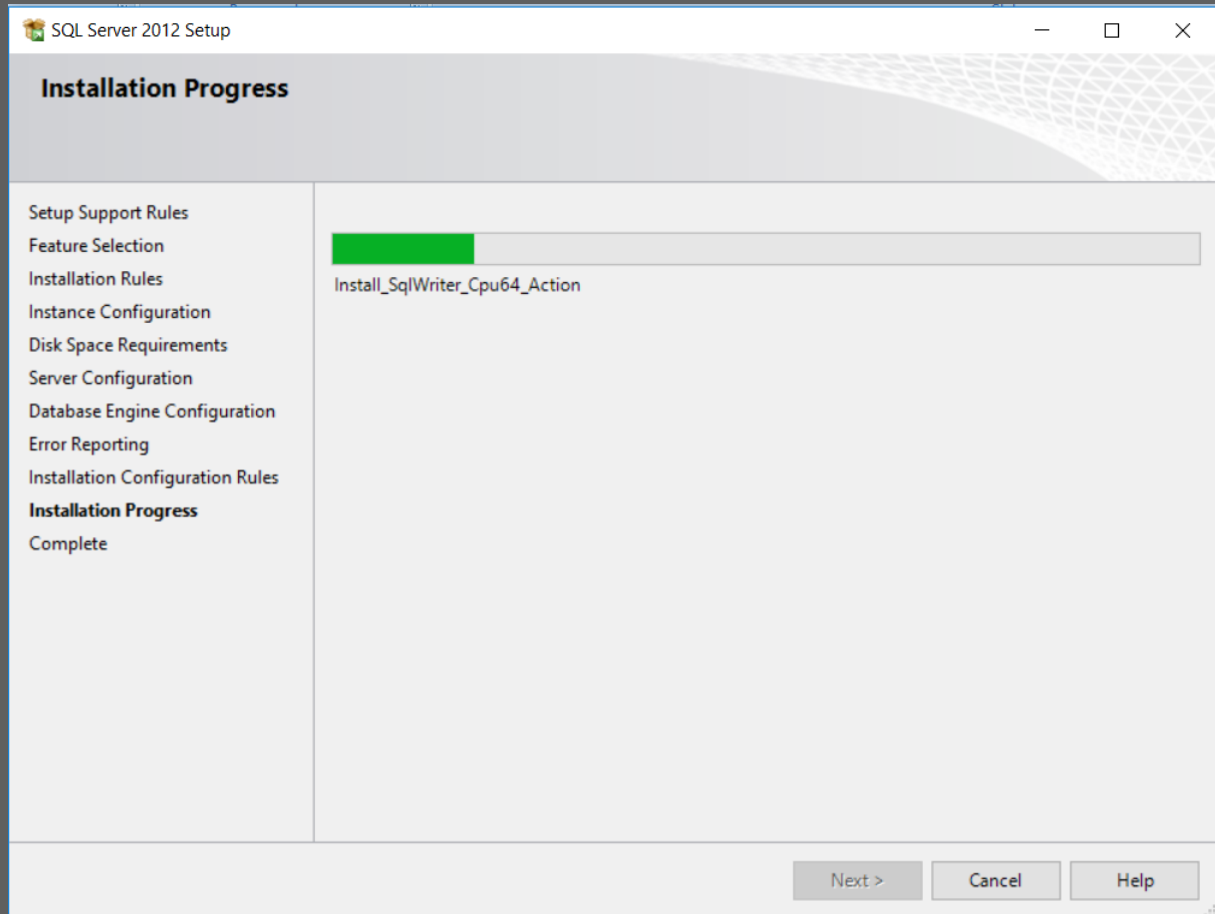
DESKTOP	<input type="text"/>
---------	----------------------

SQL Server administrators have unrestricted access to the Database Engine.

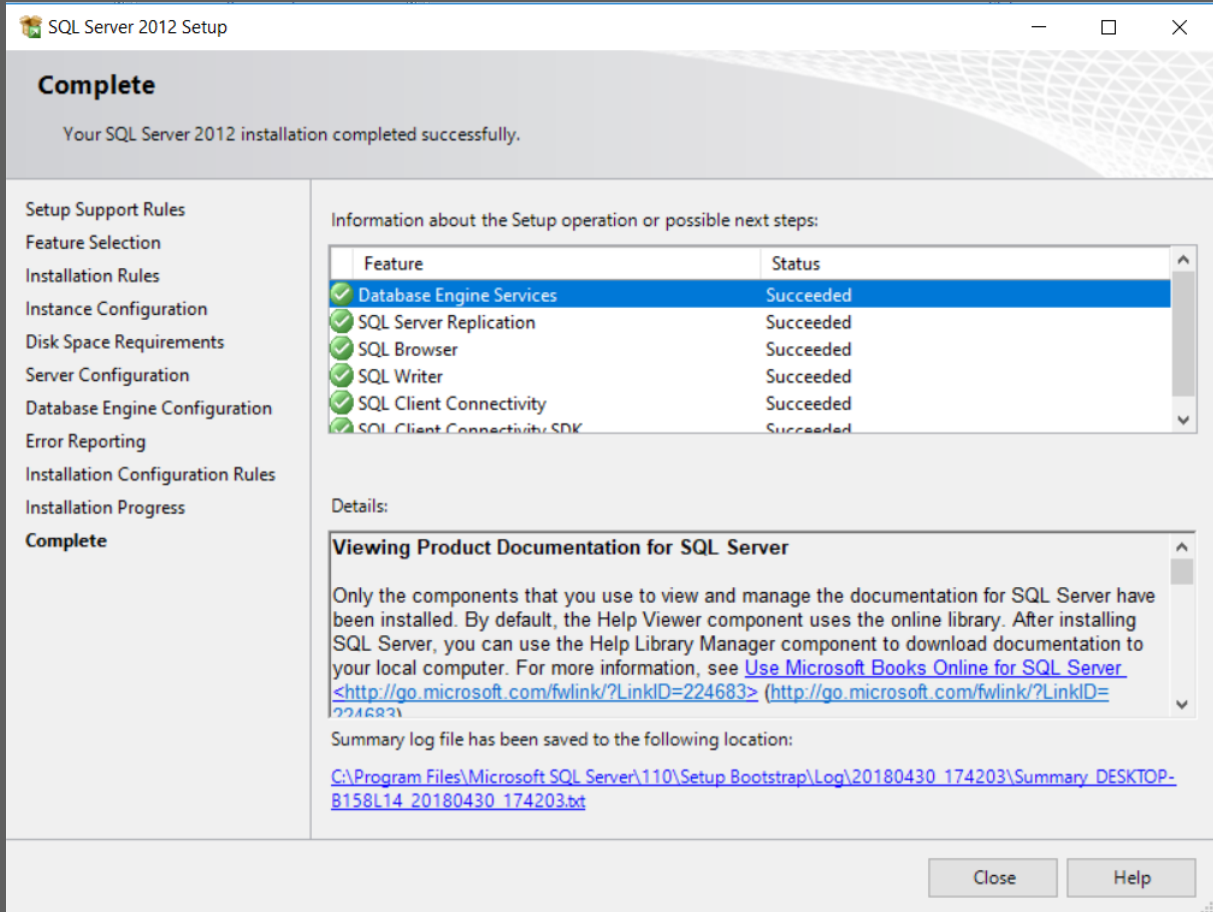
Add Current User | Add... | Remove

< Back | **Next >** | Cancel | Help

At this point, SQL server will be installed on your computer. This could take a while to complete depending on the computer you are using.



Once the installation is completed, a window will show you the details of what was completed and if there were any issues.



NOW, You can start discovering our new software DMS.

6. APPENDIX

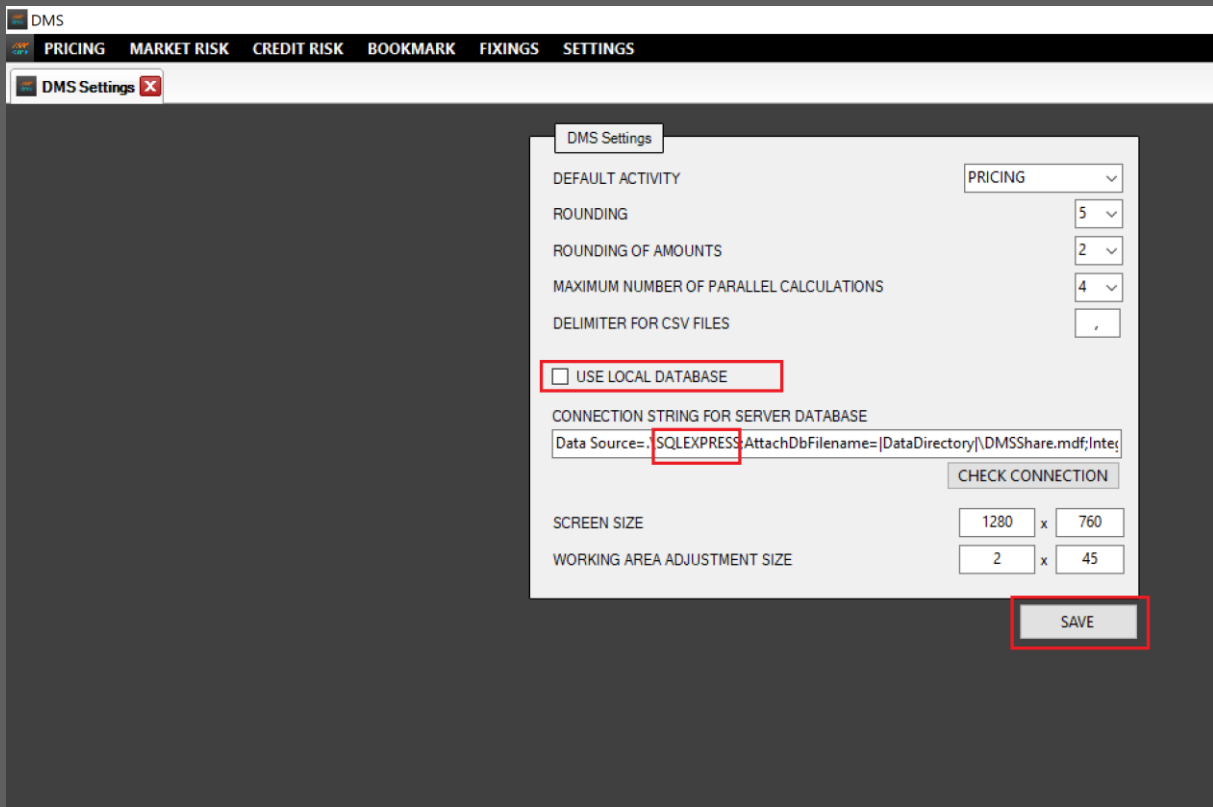
How to change the instance name in the DMS :

In case SQL server 2012 or 2008 R2 are already installed using instance ID other than «SQLEXPRESS», please configure DMS to use your instance ID by following the steps below :

1. After finishing the installation of DMS software, please go to the Application folder (By default, the path to the application folder is : C:\Program Files\DMS).
2. Open the XML config file « DMSolution.exe » using a text editor.
3. You can notice that the instance ID « SQLEXPRESS » is written two times in this file (as you can see in example below). Therefore, please replace « SQLEXPRESS » by your instanceID.

```
<?xml version="1.0"?>
<configuration>
  <configSections>
  </configSections>
  <connectionStrings>
    <add name="DMSolution.Properties.Settings.DMSConnectionString"
      connectionString="Data Source= | DataDirectory | \DMS.sdf"
      providerName="Microsoft.SqlServerCe.Client.3.5" />
    <add name="DMSolution.Properties.Settings.DMSSetConnectionString"
      connectionString="Data
Source=. \SQLEXPRESS;AttachDbFilename= | DataDirectory | \DMSSet.mdf;Integrated Security=True;User
Instance=True;"
      providerName="System.Data.SqlClient" />
    <add name="DMSolution.Properties.Settings.DMSShareConnectionString"
      connectionString="Data
Source=. \SQLEXPRESS;AttachDbFilename= | DataDirectory | \DMSShare.mdf;Integrated
Security=True;User Instance=True;"
      providerName="System.Data.SqlClient" />
  </connectionStrings>
  <startup><supportedRuntime version="v4.0"
sku=".NETFramework,Version=v4.0"/></startup></configuration>
```

4. Now you can open DMS software. After login, please go to « Setting>DMS Settings » then uncheck « local database » and replace the text « SQLEXPRESS » in the connection string by your Instance ID then click SAVE.



DMS is now configured to be used with your instance ID.